

IMPORTANT: When ordering, list part number, part name, gun gauge/caliber and serial number. Please specify grade. Prices F.O.B. point of shipment – subject to change without notice. Prices effective January 1, 2024.

Ref. #		Part #	Description
1	*	B133800016	INERTIA BLOCK, 12GA
1	*	B133800068	INERTIA BLOCK, 20GA
1	*	B133800082	INERTIA BLOCK, 28GA
2	*	B1334272	INERTIA BLOCK PIN
3	***	B133800015	COCKING LEVER
3	***	B133800087	COCKING LEVER, GRADE V
3	***	B133800088	COCKING LEVER, GRADE VII
4	*	B133800010	COCKING LEVER LIFTER, 12GA, "ROUGH"
4	*	B133800057	COCKING LEVER LIFTER, 12GA, (GEN2)
4	*	B133800084	COCKING LEVER LIFTER, 12GA, GRADE V
4	*	B133800085	COCKING LEVER LIFTER, 12GA, GRADE VII
4	*	B1334051	COCKING LEVER LIFTER, 20-28-.410
4	*	B133415C	COCKING LEVER LIFTER, 20-28-.410 GRADE III
4	*	B133415G	COCKING LEVER LIFTER, 20-28-.410 GRADE VI
6	*	B133800011	COCKING LEVER LIFTER PIN, 12GA
6	*	B1334061	COCKING LEVER LIFTER PIN, 20-28-.410
6	*	B133800058	COCKING LEVER LIFTER RETAINING SCREW, (GEN2)
6	*	B133800060	COCKING LEVER LIFTER SPRING RETAINING PIN, (GEN2)
7	*	B133800012	COCKING LEVER LIFTER SPRING, 12GA
7	*	B133800059	COCKING LEVER LIFTER SPRING, 12GA (GEN2)
7	*	B1334066	COCKING LEVER LIFTER SPRING, 20-28-.410
9	*	B1336032	COCKING LEVER PIN SET SCREW, 12GA
10	*	B133800017	CONNECTOR, 12GA
10	*	B133800069	CONNECTOR, 20-28.410
11	*	B1334074	CONNECTOR STOP PIN
12	*	B133800055	DISCONNECTOR (GEN2)
12	*	B133800089	DISCONNECTOR, .410
12	*	B133800018	DISCONNECTOR, 12GA
12	*	B133800070	DISCONNECTOR, 20-28GA
13	*	B133800019	DISCONNECTOR SPRING
13	*	B133800056	DISCONNECTOR SPRING (GEN2)
14	*	B133800043	EJECTOR HAMMER PIN
15	*	B1334130	EJECTOR HAMMER SPRING
16	*	B1334132	EJECTOR HAMMER SPRING GUIDE
17	*	B1334134	EJECTOR HAMMER SPRING RECEIVER
18	*	B1334135	EJECTOR HAMMER SPRING RECEIVER SCREW
19	*	B133830001	EJECTOR HAMMER SEAR, OVER (LEFT)
20	*	B133830002	EJECTOR HAMMER SEAR, UNDER (RIGHT)
21	*	B133800042	EJECTOR SEAR
22	*	B1334140	EJECTOR SEAR PIN
23	*	B1334138	EJECTOR SEAR SPRING
24	*	B1334145	EJECTOR TRIP ROD, 12GA (OVER)
24	*	B1334149	EJECTOR TRIP ROD, 20-28-.410 (OVER)
25	*	B1334139	EJECTOR TRIP ROD, 12GA (UNDER)
25	*	B1334144	EJECTOR TRIP ROD, 20-28-.410 (UNDER)
26	*	B1334086	EJECTOR, RIGHT/LEFT, .410
26	*	B1334082	EJECTOR, RIGHT/LEFT, 12GA
26	*	B1334083	EJECTOR, RIGHT/LEFT, 20GA
26	*	B1334085	EJECTOR, RIGHT/LEFT, 28GA
27	*	B1334110	EJECTOR EXTENSION SCREW
28	*	B1334106	EJECTOR EXTENSION, 12GA (LEFT)
28	*	B1334107	EJECTOR EXTENSION, 20-28-.410 (LEFT)
29	*	B1334102	EJECTOR EXTENSION, 12GA (RIGHT)
29	*	B1334103	EJECTOR EXTENSION, 20-28-.410 (RIGHT)
30		B1334114	EJECTOR RETAINING SCREW
31		B1334168	EJECTOR RETAINING PIN
32		B1334164	FIRING PIN RETURN SPRING, 12GA (UNDER)

Ref. #		Part #	Description
32		B1334165	FIRING PIN RETURN SPRING, 20-28-.410 (UNDER)
33		B1334148	FIRING PIN, 12GA (OVER)
33		B1334150	FIRING PIN, 20-28-.410 (OVER)
34		B1334157	FIRING PIN, 12GA (UNDER)
34		B1334159	FIRING PIN, 20-28-.410 (UNDER)
35	*	B133800036	FOREARM BRACKET, "ROUGH"
35	*	B133820002	FOREARM BRACKET, SPORTING/TRAP, GOLDEN CLAYS ('17)
36		B1334417	TAKE DOWN LEVER SCREW
37		B133800040	FOREARM BRACKET (FRONT)
38		B133800040	FOREARM BRACKET SCREW (REAR)
39		B133800038	FOREARM BRACKET SCREW NUT
40	*	B133865016	FOREARM, .410, FIELD/FEATHER
40	*	B133860057	FOREARM, .410, SPORTING MEDALLION, HG
40	*	B133865018	FOREARM, .410, SPORTING, GRADE VI/VII
40	*	B133865017	FOREARM, .410, SPORTING/PRO SPORTING, GRADE III/IV
40	*	B133800006	FOREARM, 12, FIELD/FEATHER (PIONT CHECKERING)
40	*	B133800053	FOREARM, 12, FIELD/FEATHER, GRADE III (GLOSS)
40	*	B133800052	FOREARM, 12, FIELD/FEATHER, GRADE V
40	*	B133860042	FOREARM, 12, SPORTING (LH)
40	*	B133860046	FOREARM, 12, SPORTING ADJ COMB (LH)
40	*	B133860044	FOREARM, 12, SPORTING MAPLE
40	*	B133860035	FOREARM, 12, SPORTING MEDALLION, HG
40	*	B133860039	FOREARM, 12, SPORTING PARALLEL COMB
40	*	B133865004	FOREARM, 12, SPORTING, GOLDEN CLAYS AJUST-ABLE COMB
40	*	B133865005	FOREARM, 12, SPORTING, GRADE VI/VII
40	*	B133865025	FOREARM, 12, SPORTING, S3, GRADE V/VI
40	*	B133800007	FOREARM, 12, SPORTING/PRO SPORTING, GRADE III/IV
40	*	B133860037	FOREARM, 12, TRAP MAPLE
40	*	B133800064	FOREARM, 12, TRAP, GRADE III/IV
40	*	B133865007	FOREARM, 12, TRAP, GRADE IV/V
40	*	B133865006	FOREARM, 12, TRAP, GRADE V/VI
40	*	B133865008	FOREARM, 12, TRAP, GRADE VI/VII
40	*	B133865345	FOREARM, 20, FIELD, GRADE IV/V
40	*	B133865011	FOREARM, 20, FIELD/FEATHER
40	*	B133860053	FOREARM, 20, SPORTING MEDALLION, HG
40	*	B133865010	FOREARM, 20, SPORTING, GRADE VI/VII
40	*	B133865012	FOREARM, 28, FIELD/FEATHER
40	*	B133860055	FOREARM, 28, SPORTING MEDALLION, HG
40	*	B133865014	FOREARM, 28, SPORTING, GRADE VI/VII
40	*	B133865013	FOREARM, 28, SPORTING/PRO SPORTING, GRADE III/IV
41	*	B1334267	HAMMER PIN
42	***	B133800022	HAMMER, 12GA (OVER)
42	***	B133800090	HAMMER, 20-.410 (OVER)
42	***	B133800091	HAMMER, 28GA (OVER)
43	***	B133800023	HAMMER, 12GA (UNDER)
43	***	B133842576	HAMMER, 12GA (UNDER) (LH)
43	***	B133800092	HAMMER, 20-.410 (UNDER)
43	***	B133800093	HAMMER, 28GA (UNDER)
44	***	B133800013	HINGE PIN
45	***	B133842567	LOCKING BOLT, 12GA, (LH)
45	***	B133800029	LOCKING BOLT, 12GA, (RH)
46		B133800094	MAINSRING WASHER, 28-.410
46		B133800054	MAINSRING, 12-20GA (GEN2)
46		B133800095	MAINSRING, 28-.410

\* Indicates part must be fitted by Browning Service Department or qualified gunsmith.  
 \*\*\* Factory replacement only. Firearm must be returned.  
 \*\*\*\* These parts are no longer available.  
 + Part may be purchased only by holders of a current, valid Federal Firearms License.  
 NOTE: Unless otherwise indicated, part is interchangeable between gauges/calibers.

IMPORTANT: When ordering, list part number, part name, gun gauge/caliber and serial number. Please specify grade. Prices F.O.B. point of shipment – subject to change without notice. Prices effective January 1, 2024.

Ref. #	Part #	Description
47	B1334297	MAINSRING GUIDE
48	B133800032	OVER TRAVEL ADJUSTMENT PIN
49	B133800045	RECOIL PAD SCREW
50	B133800049	RECOIL PAD WASHER (INFLEX2)
51	BST81003AA	RECOIL PAD, FIELD/SPORTING/PRO, .60" (INFLEX2)
51	BST81001AA	RECOIL PAD, FIELD/SPORTING/PRO, 1" (INFLEX2)
51	BST42039AA	RECOIL PAD, FIELD/SPORTING/PRO, 1.25" (INFLEX2)
51	B133810003	RECOIL PAD, PRO TRAP HRAC, .60" (INFLEX2)
51	B133810004	RECOIL PAD, PRO TRAP HRAC, 1" (INFLEX2)
51	B133810001	RECOIL PAD, PRO TRAP, .60" (INFLEX2)
51	B133810002	RECOIL PAD, PRO TRAP, 1" (INFLEX2)
52	* B133800001	RIB, 725, FIELD 6.2MM, 26"
52	* B133800002	RIB, 725, FIELD 6.2MM, 28"
52	* B133800003	RIB, 725, SPORTING(F.R.) 8-11MM, 28"
52	* B133800004	RIB, 725, SPORTING(F.R.) 8-11MM, 30"
52	* B133800005	RIB, 725, SPORTING(F.R.) 8-11MM, 32"
52	* B133815305	RIB, TRAP MAX, 30"
52	* B133815304	RIB, TRAP MAX, 32"
53	B1334328	SEAR PIN
54	B133800033	SEAR SPRING, 12GA
54	B133800076	SEAR SPRING, 20-28-.410
55	*** B133800020	SEAR, 12GA (OVER)
55	*** B133800071	SEAR, 20-.410 (OVER)
55	*** B133800096	SEAR, 28GA (OVER)
56	*** B133800021	SEAR, 12GA (UNDER)
56	*** B133800072	SEAR, 20-.410 (UNDER)
56	*** B133800097	SEAR, 28GA (UNDER)
57	*** B133800099	SAFETY/BARREL SELECTOR, 12GA, GRADE V
57	*** B133800100	SAFETY/BARREL SELECTOR, 12GA, GRADE VII
57	*** B133860048	SAFETY/BARREL SELECTOR, 12GA, MATTE BLACK
57	*** B1337771	SAFETY/BARREL SELECTOR, 20-28-.410
58	* B1334304	SELECTOR BALL
59	* B1334306	SELECTOR BALL SPRING
60	* B1334308	SELECTOR BLOCK
61	* B1334313	SELECTOR SPRING DETENT PIN
62	* B1334312	SELECTOR SPRING
63	* B1334314	SELECTOR SPRING SCREW
64	B0008199	FRONT SIGHT, FIELD (IVORY BEAD)
64	B1331007	FRONT SIGHT, SPORTING (HIVIZ PRO COMP)
65	B0006234	MID BEAD
66	B1334386	STOCK BOLT
66	B1336386	STOCK BOLT, 12GA, SUPERLIGHT
66	B1337146	STOCK BOLT, 20GA 230MM
66	B1336387	STOCK BOLT, 20GA SUPERLIGHT
66	B133461002	STOCK BOLT, ADJUSTABLE COMB, 102MM
66	B1337148	STOCK BOLT, ADJUSTABLE COMB, 172MM
66	B1337149	STOCK BOLT, ADJUSTABLE COMB, 197MM
66	B1337215	STOCK BOLT, ALLEN HEAD
66	B1337762	STOCK BOLT, FEATER, 192MM
67	B1334390	STOCK BOLT LOCK WASHER
67	B1337300	STOCK BOLT LOCK WASHER, ADJUSTABLE COMB, TYPE 3-6
68	B1334389	STOCK BOLT FLAT WASHER
68	B1337822	STOCK BOLT FLAT WASHER, ADJ COMB, TYPE 3-6
70	* B133800039	TAKEDOWN LEVER BRACKET ASSEMBLY, "ROUGH"
70	* B133820003	TAKEDOWN LEVER BRACKET ASSEMBLY, GOLDCLAYS, SPORTING/TRAP

Ref. #	Part #	Description
70	* B133800102	TAKEDOWN LEVER BRACKET ASSEMBLY, GRADE V
70	* B133800103	TAKEDOWN LEVER BRACKET ASSEMBLY, GRADE VII
71	B1334420	TAKEDOWN LEVER PIN
72	B133800041	TAKEDOWN LEVER SPRING
73	B1334314	TAKEDOWN LEVER SPRING SCREW
74	* B133800025	TOP LEVER 12GA, "ROUGH"
74	* B133842570	TOP LEVER, 12GA, (LH)
74	* B133820001	TOP LEVER, 12GA, GOLDEN CLAY, SORTING/TRAP
74	* B133800105	TOP LEVER, 12GA, GRADE V
74	* B133800106	TOP LEVER, 12GA, GRADE VII
74	* B133800073	TOP LEVER, 20-28-.410
75	* B133800026	TOP LEVER DOG
75	* B133842572	TOP LEVER DOG, (LH)
76	B1334472	TOP LEVER DOG SCREW
77	B1334460	TOP LEVER SPRING
78	B1334463	TOP LEVER SPRING RETAINER
78	B133842574	TOP LEVER SPRING RETAINER, (LH)
80	* B133860026	STOCK, .410, FIELD/FEATHER
80	* B133860027	STOCK, .410, SPORTING, GRADE III/IV
80	* B133860056	STOCK, .410, SPORTING, MEDALLION, HG
80	* B133860061	STOCK, 12, FEATHER SUPERLIGHT
80	* B133800008	STOCK, 12, FIELD/FEATHER, GRADE II/III
80	* B133800050	STOCK, 12, FIELD/FEATHER, GRADE III
80	* B133800051	STOCK, 12, FIELD/FEATHER, GRADE V
80	* B133860001	STOCK, 12, SKEET, GRADE II/III
80	* B133860002	STOCK, 12, SKEET, GRADE II/III, ADJ COMB
80	* B133800009	STOCK, 12, SPORTING, GRADE III/IV
80	* B133860041	STOCK, 12, SPORTING, GRADE III/IV (LH)
80	* B133860045	STOCK, 12, SPORTING, GRADE III/IV ADJ COMB (LH)
80	* B133800061	STOCK, 12, SPORTING, GRADE III/IV, (LH)
80	* B133800067	STOCK, 12, SPORTING, GRADE III/IV, ADJ COMB, HIGH RIB
80	* B133860004	STOCK, 12, SPORTING, GRADE III/IV, HIGH RIB
80	* B133860031	STOCK, 12, SPORTING, GRADE III/IV, HIGH RIB, (LH)
80	* B133860032	STOCK, 12, SPORTING, GRADE III/IV, HIGH RIB, ADJ COMB, (LH)
80	* B133860016	STOCK, 12, SPORTING, GRADE III/IV, LLOP, ADJ COMB
80	* B133860003	STOCK, 12, SPORTING, GRADE IV/V
80	* B133860013	STOCK, 12, SPORTING, GRADE V/VI, GOLDEN CLAYS, ADJ COMB
80	* B133860014	STOCK, 12, SPORTING, GRADE VI/VII
80	* B133860015	STOCK, 12, SPORTING, LLOP, GRADE III/IV
80	* B133860043	STOCK, 12, SPORTING, MAPLE, AAAA
80	* B133860034	STOCK, 12, SPORTING, MEDALLION, HG
80	* B133860040	STOCK, 12, SPORTING, PARALLEL COMB
80	* B133860038	STOCK, 12, SPORTING, PARALLEL COMB, ADJ COMB
80	* B133860030	STOCK, 12, SPORTING, S3, GRADE V/VI
80	* B133860017	STOCK, 12, SPORTING/PRO SPORTING, GRADE III/IV, PRO, ADJ COMB
80	* B133860323	STOCK, 12, TRAP MAX, ADJ COMB
80	* B133800065	STOCK, 12, TRAP, GRADE III/IV, ADJ COMB
80	* B133800066	STOCK, 12, TRAP, GRADE III/IV, ADJ COMB, (LH)
80	* B133860009	STOCK, 12, TRAP, GRADE III/IV, GUNS UNLTD USC
80	* B133860010	STOCK, 12, TRAP, GRADE III/IV, GUNS UNLTD USC (LH)
80	* B133800062	STOCK, 12, TRAP, GRADE III/IV, MC
80	* B133800063	STOCK, 12, TRAP, GRADE III/IV, MC, (LH)
80	* B133860021	STOCK, 12, TRAP, GRADE III/IV, PRO, ADJ COMB
80	* B133860019	STOCK, 12, TRAP, GRADE IV/V

\*Indicates part must be fitted by Browning Service Department or qualified gunsmith.

\*\*\*Factory replacement only. Firearm must be returned.

+ Part may be purchased only by holders of a current, valid Federal Firearms License.

NOTE: Unless otherwise indicated, part is interchangeable between gauges/calibers.

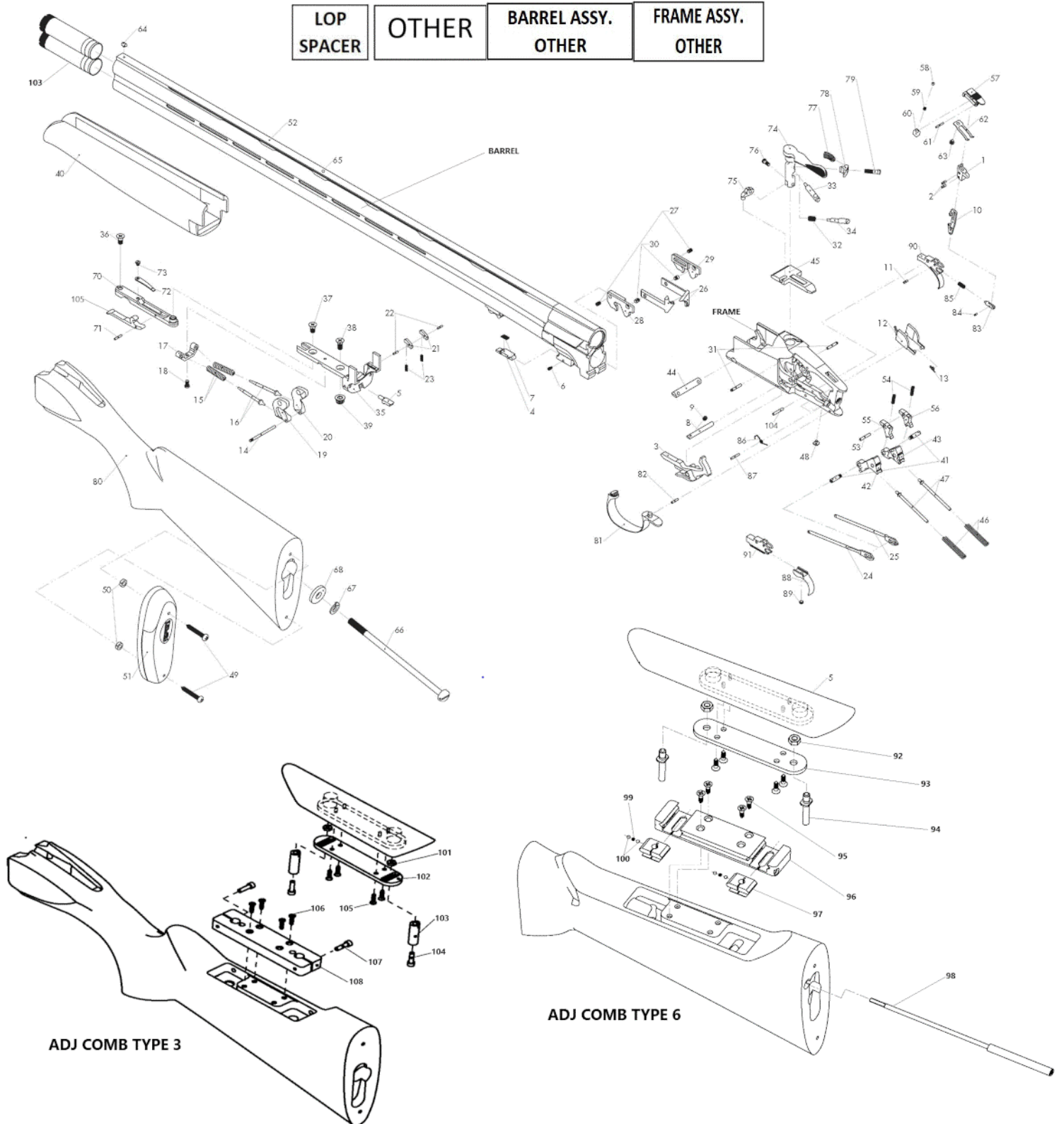
IMPORTANT: When ordering, list part number, part name, gun gauge/caliber and serial number. Please specify grade. Prices F.O.B. point of shipment – subject to change without notice. Prices effective January 1, 2024.

Ref. #		Part #	Description
80	*	B133860018	STOCK, 12, TRAP, GRADE V/VI, GOLDEN CLAYS, ADJ COMB
80	*	B133860005	STOCK, 12, TRAP, GRADE V/VI, MILLERS
80	*	B133860006	STOCK, 12, TRAP, GRADE V/VI, MILLERS, (LH)
80	*	B133860007	STOCK, 12, TRAP, GRADE V/VI, MILLERS, ADJ COMB
80	*	B133860008	STOCK, 12, TRAP, GRADE V/VI, MILLERS, ADJ COMB, (LH)
80	*	B133860020	STOCK, 12, TRAP, GRADE VI/VII
80	*	B133860036	STOCK, 12, TRAP, MAPLE, AAAA
80	*	B133860062	STOCK, 20-28, FEATHER SUPERLIGHT
80	*	B133860012	STOCK, 20-28, FIELD, GRADE II/III
80	*	B133860344	STOCK, 20-28, FIELD, GRADE IV/V
80	*	B133860011	STOCK, 20-28, SPORTING, GRADE III/IV
80	*	B133860023	STOCK, 20-28, SPORTING, GRADE VI/VII
80	*	B133860052	STOCK, 20-28, SPORTING, MEDALLION, HG
80	*	B133860024	STOCK, 20-28, SPORTING/PRO SPORTING, GRADE III/IV, ADJ COMB
81		B133800030	TRIGGER GUARD, FIELD/FEATHER
81		B133800108	TRIGGER GUARD, GRADE V
81		B133800109	TRIGGER GUARD, GRADE VII
81		B133860047	TRIGGER GUARD, MATTE W/SILVER BUCK
81		B133800031	TRIGGER GUARD, SPORTING
82		B1334328	TRIGGER GUARD PIN
83	*	B1334492	TRIGGER PISTON
84	*	B1334494	TRIGGER PISTON PIN
85	*	B133800035	TRIGGER PISTON SPRING, 12GA
85	*	B133800077	TRIGGER PISTON SPRING, 20GA
86	*	B133800047	TRIGGER RETURN SPRING
87	*	B133800048	TRIGGER RETURN SPRING RETAINING PIN
88		B1337028	TRIGGER SHOE, NARROW SMOOTH
88		B1337026	TRIGGER SHOE, WIDE CHECKERED
88		B1337038	TRIGGER SHOE, WIDE SMOOTH (W/RH CANT)
89		B1337025	TRIGGER SHOE SET SCREW
90	*	B133800027	TRIGGER, 12GA, FIELD/HUNTER
90	*	B133800074	TRIGGER, 20GA
91	*	B133800028	TRIGGER BASE, 12GA
91	*	B133800075	TRIGGER BASE, 20GA
92		B1337210	HEIGHT PIN/POST NUT (TYPE-6)
93		B1337209	ADJUSTABLE COMB CHEEK PIECE BASE PLATE (TYPE-6)
94		B1337208	ADJUSTABLE COMB HEIGHT PIN/POST (TYPE-6)
95		B1337214	ADJUSTABLE COMB STOCK HARDWARE SCREW (TYPE-6)
96		B1337211	ADJUSTABLE COMB BASE/SLIDES (#96/97) (TYPE-6)
98		B133823007	ADJUSTABLE COMB SERVO BOLT, 114.3MM, SPORTING
98		B133823008	ADJUSTABLE COMB SERVO BOLT, 121.7MM, PRO SPORTING
99		B1337212	ADJUSTABLE COMB DETENT SPRING
100		B1337213	ADJUSTABLE COMB DETENT BALL
101		U1335651AJ	ADJUSTABLE COMB HEIGHT PIN/POST NUT (Type-3)
102		U1335652AE	ADJUSTABLE COMB CHEEK PIECE BASE PLATE (Type-3)
104		B1334328	TRIGGER PIN
105		B1337214	ADJUSTABLE COMB CHEEK PIECE HARDWARE SCREW (TYPE-3)
107		B1793651	ADJUSTABLE COMB DROP STOP SET SCREW
		B133899001	CASE, 725 PRO, ABS
		B133815319	CENTER RIB DAMPER, C725 TRAP MAX

Ref. #		Part #	Description
		B133815314	CLICK BALL, C725 TRAP MAX
		B133815316	CLICK PLATE SCREW, C725 TRAP MAX
		B133815315	CLICK PLATE, C725 TRAP MAX
	*	B133800037	COCKING LEVER LIFTER BUSHING
		B133815309	ELEVATOR WHEEL, C725 TRAP MAX
		B133815307	FRONT RIB DAMPER RETAINING PIN, C725 TRAP MAX
		B133815311	FRONT RIB DAMPER, C725 TRAP MAX
		B133815307	RIB ELEVATOR SCREW RETAINING PIN, C725 TRAP MAX
		B133815306	RIB ELEVATOR SCREW, C725 TRAP MAX
		B133815318	RIB PIVOT C725 TRAP MAX
		B133815317	RIB STOP PIN C725 TRAP MAX
	*	B133815305	RIB, C725, TRAP MAX, 30"
	*	B133815304	RIB, C725, TRAP MAX, 32"
	*	B133860059	RIB, C725, UN-SINGLE 32"
	*	B133860060	RIB, C725, UN-SINGLE 34"
		B133800079	STOCK BALANCER, PRO
		B133815310	WHEEL WASHER C725 TRAP MAX

\*Indicates part must be fitted by Browning Service Department or qualified gunsmith.  
 \*\*\*Factory replacement only. Firearm must be returned.  
 + Part may be purchased only by holders of a current, valid Federal Firearms License.  
 NOTE: Unless otherwise indicated, part is interchangeable between gauges/calibers.

IMPORTANT: When ordering, list part number, part name, gun gauge/caliber and serial number. Please specify grade. Prices F.O.B. point of shipment – subject to change without notice. Prices effective January 1, 2024.



\*Indicates part must be fitted by Browning Service Department or qualified gunsmith.  
 \*\*\*Factory replacement only. Firearm must be returned.  
 + Part may be purchased only by holders of a current, valid Federal Firearms License.  
 NOTE: Unless otherwise indicated, part is interchangeable between gauges/calibers.