



IMPORTANT: When ordering, list part number, part name, gun gauge/caliber and serial number. Please specify grade. Prices F.O.B. point of shipment — subject to change without notice. Prices effective January 1, 2013.

Table with 4 columns: REF. NO., PART NO., DESCRIPTION, MSRP (US\$). Rows include parts like AC BASE (\$97.75), COCKING LEVER, EJECTOR SEAR LINK, and EJECTOR SPRING.

Table with 4 columns: REF. NO., PART NO., DESCRIPTION, MSRP (US\$). Rows include parts like EJECTOR TIMING ADJUSTMENT SCREW, ELEVATOR SCREW, FIRING PIN, and FOREARM parts for various models.

\*Indicates part must be fitted by Browning Service Department or qualified gunsmith. \*\*\*Factory replacement only. Firearm must be returned. +Part may be purchased only by holders of a current, valid Federal Firearms License. NOTE: Unless otherwise indicated, part is interchangeable between gauges/calibers.



**IMPORTANT:** When ordering, list part number, part name, gun gauge/caliber and serial number. Please specify grade.  
Prices F.O.B. point of shipment — subject to change without notice. Prices effective January 1, 2013.

REF. NO.	PART NO.	DESCRIPTION	MSRP (US\$)
27	B1331154	FOREARM INSERT, 28, LEFT	\$10.00
27	B1331229	FOREARM INSERT, 410, LEFT, CLASSIC	10.00
27	B1331232	FOREARM INSERT, 410, LEFT	10.00
28	B1331006	FOREARM INSERT NUT	1.25
29	B1331173	FOREARM INSERT, 12, RIGHT, CLASSIC	5.75
29	B1331004	FOREARM INSERT, 12, RIGHT	10.00
29	B1331226	FOREARM INSERT, 20, RIGHT, CLASSIC	10.00
29	B1331115	FOREARM INSERT, 20, RIGHT	10.00
29	B1331228	FOREARM INSERT, 28, RIGHT, CLASSIC	10.00
29	B1331153	FOREARM INSERT, 28, RIGHT	10.00
29	B1331230	FOREARM INSERT, 410, RIGHT, CLASSIC	10.00
29	B1331233	FOREARM INSERT, 410, RIGHT	10.00
30	B1331290	FOREARM INSERT SCREW, 16MM 20-28-410 CLASSIC, FRONT & REAR	1.25
30	B1331289	FOREARM INSERT SCREW, 19MM 20, REAR / 28-410, FRONT & REAR	1.25
30	B1331005	FOREARM INSERT SCREW, 20MM 12, 3" FRONT & REAR / 12, 3.5" FRONT / 20 FRONT	1.25
30	B1331288	FOREARM INSERT SCREW, 21MM 12, 3.5" REAR	1.25
31	B1331094	FOREARM LEVER PIVOT PIN	1.25
32	B1331095	FOREARM LEVER SPRING	1.25
33	* B1331093	FOREARM LOCKING LEVER	32.00
NS	B1331096	FOREARM LOCKING LEVER SPRING	1.25
35	B1331291	FOREARM SCREW, 10.1MM, FRONT, CLASSIC	5.75
35	B1331292	FOREARM SCREW, 10.6MM, FRONT, CLASSIC TRAP	5.75
35	B1331080	FOREARM SCREW, 7.3MM, FRONT	6.50
35	B1331293	FOREARM SCREW, 8.1MM, FRONT & REAR, 20-28-410	5.75
36	B1331081	FOREARM SCREW, 7.5MM, REAR	5.75
36	B1331293	FOREARM SCREW, 8.1MM, FRONT & REAR, 20-28-410	5.75
38	* B1331038	INERTIA MASS, 12	15.75
38	* B1331134	INERTIA MASS, 20-28-410	15.75
39	B1331044	INERTIA MASS RETAINING PIN	2.50
40	* B1331053	LOCKING CAM	9.25
41	* B1331054	LOCKING CAM SCREW	4.75
42	* B1331020	LOCKING PIN BUSHING	12.00
42	* B1331266	LOCKING PIN BUSHING, 20, FEATHER	12.00
43	* B1331050	LOCKING PIN CROSS MEMBER, 12	27.75
43	* B1331269	LOCKING PIN CROSS MEMBER, 20, FEATHER	28.00
43	* B1331121	LOCKING PIN CROSS MEMBER, 20-28-410	28.00
44	* B1331048	LOCKING PIN, 12, LEFT	33.00
44	* B1331267	LOCKING PIN, 20, LEFT, FEATHER	33.00
44	* B1331118	LOCKING PIN, 20-28-410, LEFT	33.00
45	* B1331049	LOCKING PIN, 12, RIGHT	33.00
45	* B1331268	LOCKING PIN, 20, RIGHT, FEATHER	33.00
45	* B1331117	LOCKING PIN, 20-28-410, RIGHT	33.00
46	B1331052	LOCKING PIN SCREW	4.75
NS	* B0008455	RECOIL PAD, CLASSIC FIELD	23.00
NS	* B0008462	RECOIL PAD, CLASSIC SPORTING	21.75
47	B1331105	RECOIL PAD, COMPOSITE, LONG	40.25
47	B1331104	RECOIL PAD, COMPOSITE, MEDIUM	40.25
47	B1331103	RECOIL PAD, COMPOSITE, SHORT	40.25

REF. NO.	PART NO.	DESCRIPTION	MSRP (US\$)
47	B1331102	RECOIL PAD, WOOD, LONG	\$40.25
47	B1331101	RECOIL PAD, WOOD, MEDIUM	40.25
47	B1331100	RECOIL PAD, WOOD, SHORT	40.25
47A	B1331072	RECOIL PAD SCREW (2 REQUIRED)	2.50
NS	B1331107	RECOIL PAD SPACER, COMPOSITE	9.25
NS	B1331106	RECOIL PAD SPACER, WOOD	9.25
NS	B1337825	RIB ASSEMBLY, UNSINGLE, 32"	442.75
NS	B1337826	RIB ASSEMBLY, UNSINGLE, 34"	442.75
NS	B1337836	RIB CENTER PIVOT SCREW WASHER, UNSINGLE (4 REQUIRED)	1.25
NS	B1337834	RIB CENTER PIVOT SCREW, UNSINGLE (2 REQUIRED)	5.25
NS	B1337835	RIB CENTER PIVOT WASHER, UNSINGLE (2 REQUIRED)	1.25
NS	B1337833	RIB CENTER PIVOT, UNSINGLE	4.25
NS	B1337839	RIB FRONT SCREW BALL, UNSINGLE	1.25
NS	B1337838	RIB FRONT SCREW SPRING, UNSINGLE	1.25
NS	B1337837	RIB FRONT SCREW, UNSINGLE	5.25
NS	B1337831	RIB LINK PIN, UNSINGLE	1.25
NS	B1337832	RIB LINK SPRING, UNSINGLE	1.25
NS	B1331247	RIB LINK, UNSINGLE	43.75
48	* B1331034	ROCKER, 12	19.00
48	* B1331131	ROCKER, 20-28-410	19.00
49	B1331032	ROCKER PIN, 12	5.75
49	B1331132	ROCKER PIN, 20-28-410	5.75
50	B1331033	ROCKER PIN RETAINER	1.25
51	B1331067	SAFETY INDEX BALL	1.25
52	B1331069	SAFETY SPRING	4.50
53	B1331068	SAFETY SPRING	1.25
54	* B1331028	SEAR LINK, 12	21.50
54	* B1331128	SEAR LINK, 20-28-410	21.50
55	B1331029	SEAR LINK SCREW, 12	4.25
55	B1331129	SEAR LINK SCREW, 20-28-410	4.25
56	B1331030	SEAR SPRING	1.25
57	* B1331064	SELECTOR	9.00
58	B1331065	SELECTOR BUTTON	17.00
59	B1331066	SELECTOR BUTTON PIN	1.25
60	B1331019	SELECTOR POLE	1.25
61	B1331008	SIGHT, CENTER BEAD	5.25
62	B0008199	SIGHT, FRONT, FIELD	4.50
62	B1331007	SIGHT, FRONT, SPORTING, FIBER OPTIC	33.50
63	B1331073	STOCK BOLT	3.75
64	B1331075	STOCK BOLT LOCK WASHER	1.25
65	B1331074	STOCK BOLT WASHER	1.25
65	B1331185	STOCK BOLT WASHER, COMPOSITE	1.25
66	* B1331159	STOCK, 12, CLASSIC FIELD, GR I	175.00
66	* B1331300	STOCK, 12, CLASSIC FIELD, GR II/III, GLOSS OIL	410.00
66	* B1331204	STOCK, 12, CLASSIC FIELD, GR III	586.50
66	* B1331205	STOCK, 12, CLASSIC FIELD, GR VI	661.25
66	* B1331160	STOCK, 12, CLASSIC SPORTING	425.00
66	* B1331239	STOCK, 12, CLASSIC SPORTING, ADJUSTABLE COMB	925.00
66	* B1331302	STOCK, 12, CLASSIC SPORTING, GR III/IV, ADJUSTABLE COMB, GLOSS OIL	675.00

\*Indicates part must be fitted by Browning Service Department or qualified gunsmith.  
\*\*\*Factory replacement only. Firearm must be returned.  
+Part may be purchased only by holders of a current, valid Federal Firearms License.  
NOTE: Unless otherwise indicated, part is interchangeable between gauges/calibers.



IMPORTANT: When ordering, list part number, part name, gun gauge/caliber and serial number. Please specify grade. Prices F.O.B. point of shipment — subject to change without notice. Prices effective January 1, 2013.

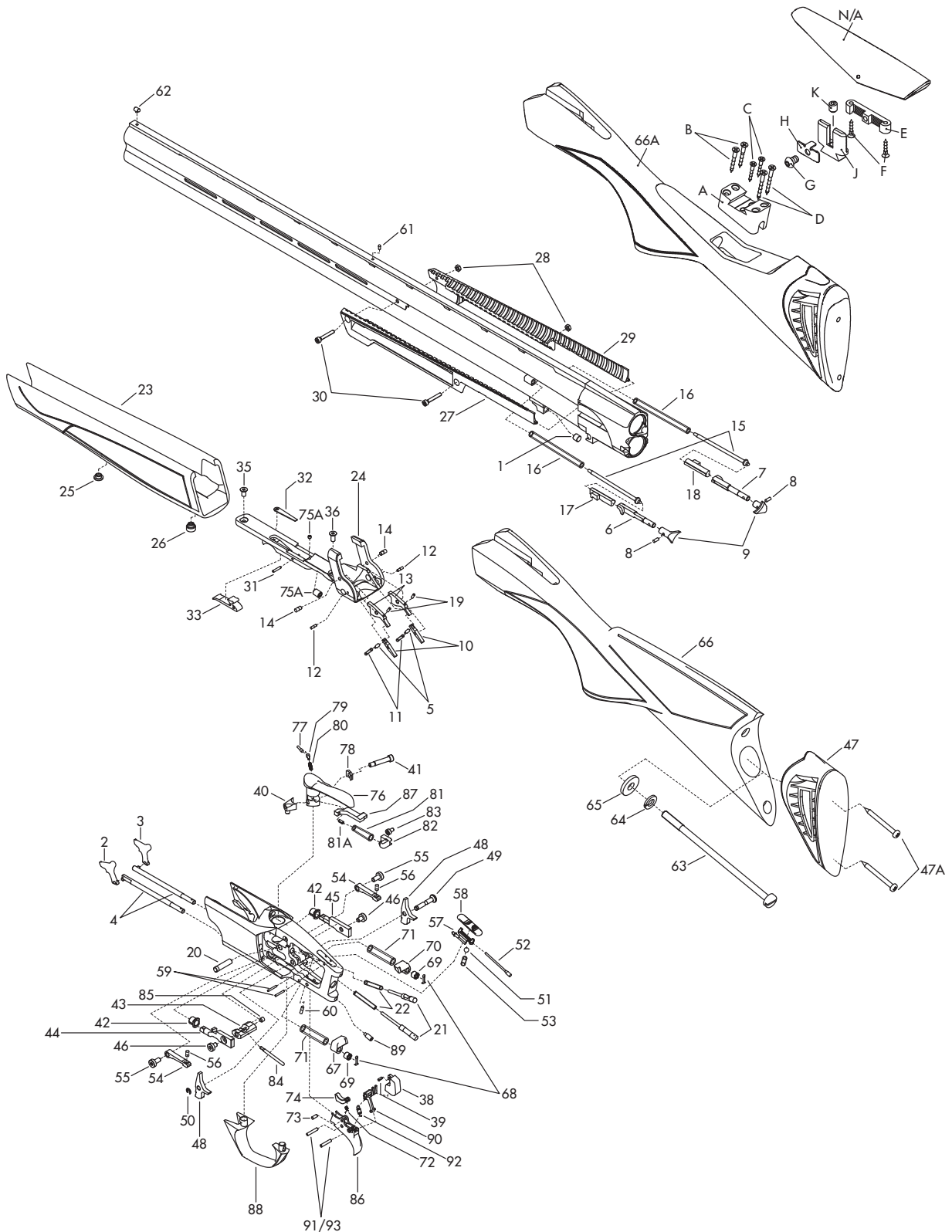
Table with 4 columns: REF. NO., PART NO., DESCRIPTION, MSRP (US\$). Rows include various shotgun stocks and strikers.

Table with 4 columns: REF. NO., PART NO., DESCRIPTION, MSRP (US\$). Rows include various shotgun strikers and trigger components.

\*Indicates part must be fitted by Browning Service Department or qualified gunsmith. \*\*\*Factory replacement only. Firearm must be returned. +Part may be purchased only by holders of a current, valid Federal Firearms License. NOTE: Unless otherwise indicated, part is interchangeable between gauges/calibers.



NOTE: WHEN ORDERING PARTS USE THE PART NUMBER AND NOT THE SCHEMATIC REFERENCE NUMBER.



Schematic is provided for parts identification only and should not be used as a guide to assemble guns. CAUTION: Browning parts are not recommended for use in other guns though models may be similar. Inadequately fitted parts may be dangerous.