



Autoloading Rifle BAR ShortTrac® and BAR LongTrac®

BAR®

IMPORTANT: When ordering, list part number, part name, gun gauge/caliber and serial number. Please specify grade.
Prices F.O.B. point of shipment — subject to change without notice. Prices effective January 1, 2013.

REF. NO.	PART NO.	DESCRIPTION	MSRP (US\$)
1	* B3177453AK	BARREL, 243 WIN, 22", PRESS FIT, GLOSS	\$390.00
1	* B3178101W7	BARREL, 243 WIN, 22", PRESS FIT, MOINF	410.00
1	* B3177539FE	BARREL, 243 WIN, 22", PRESS FIT, MONBU	410.00
1	* B3177015AK	BARREL, 243 WIN, 22", THREADED, GLOSS	460.00
1	* B3177334FE	BARREL, 243 WIN, 22", THREADED, MONBU	480.00
1	* B3177324EM	BARREL, 243 WIN, 22", THREADED, STALKER	460.00
1	* B3177461AK	BARREL, 270 WIN, 22", PRESS FIT, GLOSS	390.00
1	* B3177545FE	BARREL, 270 WIN, 22", PRESS FIT, MONBU	410.00
1	* B3177116AK	BARREL, 270 WIN, 22", THREADED, GLOSS	460.00
1	* B3177340FE	BARREL, 270 WIN, 22", THREADED, MONBU	480.00
1	* B3177336FE	BARREL, 270 WSM, 22", THREADED, MONBU	480.00
1	* B3177330EM	BARREL, 270 WIN, 22", THREADED, STALKER	460.00
1	* B3177326EM	BARREL, 270 WSM, 22", THREADED, STALKER	460.00
1	* B3177481AK	BARREL, 270 WSM, 23", PRESS FIT, GLOSS	390.00
1	* B3178062W7	BARREL, 270 WSM, 23", PRESS FIT, MOINF	410.00
1	* B3177554FE	BARREL, 270 WSM, 23", PRESS FIT, MONBU	410.00
1	* B3177497AK	BARREL, 300 WIN MAG, 24", PRESS FIT, GLOSS	390.00
1	* B3177563FE	BARREL, 300 WIN MAG, 24", PRESS FIT, MONBU	410.00
1	* B3177067AK	BARREL, 300 WIN MAG, 24", THREADED, GLOSS	460.00
1	* B3177341FE	BARREL, 300 WIN MAG, 24", THREADED, MONBU	480.00
1	* B3177331EM	BARREL, 300 WIN MAG, 24", THREADED, STALKER	460.00
1	* B3177485AK	BARREL, 300 WSM, 23", PRESS FIT, GLOSS	390.00
1	* B3177557FE	BARREL, 300 WSM, 23", PRESS FIT, MONBU	410.00
1	* B3177018AK	BARREL, 300 WSM, 23", THREADED, GLOSS	460.00
1	* B3177338FE	BARREL, 300 WSM, 23", THREADED, MONBU	480.00
1	* B3177328EM	BARREL, 300 WSM, 23", THREADED, STALKER	460.00
1	* B3177465AK	BARREL, 30-06 SPRG, 22", PRESS FIT, GLOSS	390.00
1	* B3177548FE	BARREL, 30-06 SPRG, 22", PRESS FIT, MONBU	410.00
1	* B3177073AK	BARREL, 30-06 SPRG, 22", THREADED, GLOSS	460.00
1	* B3177339FE	BARREL, 30-06 SPRG, 22", THREADED, MONBU	480.00
1	* B3177329EM	BARREL, 30-06 SPRG, 22", THREADED, STALKER	460.00
1	* B3178057W7	BARREL, 308 WIN, 22", PRESS FIT, MOINF	410.00
1	* B3177014AK	BARREL, 308 WIN, 22", THREADED, GLOSS	460.00
1	* B3177335FE	BARREL, 308 WIN, 22", THREADED, MONBU	480.00
1	* B3177325EM	BARREL, 308 WIN, 22", THREADED, STALKER	460.00
1	* B3177457AK	BARREL, 308 WIN, 23", PRESS FIT, GLOSS	390.00
1	* B3177542FE	BARREL, 308 WIN, 23", PRESS FIT, MONBU	410.00
1	* B3177489AK	BARREL, 325 WSM, 23", PRESS FIT, GLOSS	390.00
1	* B3177477AK	BARREL, 7MM WSM, 23", PRESS FIT, GLOSS	390.00
1	* B3177885FE	BARREL, 325 WSM, 23", PRESS FIT, MONBU	410.00
1	* B3177551FE	BARREL, 7MM WSM, 23", PRESS FIT, MONBU	410.00
1	* B3177493AK	BARREL, 7MM REM MAG, 24", PRESS FIT, GLOSS	390.00
1	* B3177560FE	BARREL, 7MM REM MAG, 24", PRESS FIT, MONBU	410.00

REF. NO.	PART NO.	DESCRIPTION	MSRP (US\$)
1	* B3177115AK	BARREL, 7MM REM MAG, 24", THREADED, GLOSS	\$460.00
1	* B3177342FE	BARREL, 7MM REM MAG, 24", THREADED, MONBU	480.00
1	* B3177332EM	BARREL, 7MM REM MAG, 24", THREADED, STALKER	460.00
1	* B3177337FE	BARREL, 7MM WSM, 22", THREADED, MONBU	480.00
1	* B3177327EM	BARREL, 7MM WSM, 22", THREADED, STALKER	460.00
1	* B3178061W7	BARREL, 7MM WSM, 23", PRESS FIT, MOINF	410.00
1	* B3177881AK	BARREL, 7MM-08 REM, 22", PRESS FIT, GLOSS	390.00
1	* B3178058W7	BARREL, 7MM-08 REM, 22", PRESS FIT, MOINF	410.00
1	* B3177883FE	BARREL, 7MM-08 REM, 22", PRESS FIT, MONBU	410.00
NS	U3177037AJ	BARREL MOUNTING SCREW	3.75
2	B3177304AE	BOLT COVER, LH	20.50
2	B317675901	BOLT COVER, RH	5.00
2	B317676201	BOLT COVER, RH, STALKER	6.00
3	* B3177313A3	BOLT, MAGNUM / WSM, LH	133.00
3	* B317604704	BOLT, MAGNUM / WSM, RH	100.00
3	* B3177314A3	BOLT, STANDARD, LH	133.00
3	* B317604514	BOLT, STANDARD, RH	100.00
4	B3177040AJ	BOLT RELEASE ASSEMBLY	17.00
5	B317678702	BOLT RELEASE PIN	2.50
6	B317678811	BOLT RELEASE SPRING	1.25
7	B3177306AX	BOLT SLEEVE, MAGNUM / WSM, LH	57.75
7	B3177157AX	BOLT SLEEVE, MAGNUM / WSM, RH	51.75
7	B3177305AX	BOLT SLEEVE, STANDARD, LH	57.75
7	B3177152AX	BOLT SLEEVE, STANDARD, RH	51.75
10	B317606501	BUFFER	1.25
11	B317678102	BUFFER PLATE, FRONT	1.25
12	B317677902	BUFFER PLATE, REAR	2.50
13	BST1423602	BUTT STOCK EYELET	2.50
15	B317607601	CAM PIN	8.50
16	B317687203	DISCONNECTOR	2.50
17	B317687412	DISCONNECTOR PIN	2.50
18	B3177315AX	EJECTOR, LH	6.00
18	BST7609002	EJECTOR, RH	3.75
19	B3177316AE	EJECTOR SPRING, LH	2.50
19	B317609901	EJECTOR SPRING, RH	1.25
20	BST7609601	EJECTOR STOP PIN	2.50
21	* B3177348A1	EXTRACTOR, LH	8.50
21	* B3176103A1	EXTRACTOR, RH	8.50
22	B317610501	EXTRACTOR SPRING	1.25
23	* B3177151AE	FIRING PIN	13.25
24	B317611402	FIRING PIN RETAINING PIN	3.75
25	B317611701	FIRING PIN SPRING	1.25
NS	B3177155AX	FIRING PIN STOP	8.50
26	B3177059AA	FOREARM INSERT	1.25
27	B3177025HK	FOREARM RETAINING SCREW	8.50
27	B3177025AK	FOREARM RETAINING SCREW (PRIOR TO '05) - OBSOLETE WHEN SUPPLIES EXHAUSTED	8.50
28	B3177105FV	FOREARM RETAINING SCREW FIXING SCREW	1.25

*Indicates part must be fitted by Browning Service Department or qualified gunsmith.
 ***Factory replacement only. Firearm must be returned.
 +Part may be purchased only by holders of a current, valid Federal Firearms License.
 NOTE: Unless otherwise indicated, part is interchangeable between gauges/calibers.



Autoloading Rifle BAR ShortTrac® and BAR LongTrac®

BAR®

IMPORTANT: When ordering, list part number, part name, gun gauge/caliber and serial number. Please specify grade.
Prices F.O.B. point of shipment — subject to change without notice. Prices effective January 1, 2013.

REF. NO.	PART NO.	DESCRIPTION	MSRP (US\$)
29	* B3177108JK	FOREARM, GR I, SATIN	\$83.00
29	* B3177926EH	FOREARM, GR II W/ SKIP LINE, OIL ('09 - PRESENT)	100.00
29	* B3178073W8	FOREARM, MOINF	90.00
29	* B3177296EP	FOREARM, MONBU	90.00
29	* B3177192AE	FOREARM, STALKER	60.00
30	B3177023AJ	GAS CONTROL SCREW	19.25
30	B317667102	GAS REGULATOR SCREW	11.00
31	B3177027AJ	GAS CONTROL SCREW SET SCREW	1.25
31	BST77276AJ	GAS CONTROL SCREW SET SCREW ('09 - PRESENT)	2.50
32	B3177024AJ	GAS CYLINDER CAP	8.50
33	B3177160H7	GAS PITON	10.75
NS	B317667202	GAS REGULATOR SCREW LOCK PLUNGER	2.50
NS	B317667302	GAS REGULATOR SCREW LOCK SCREW	1.25
34	* B317683013	HAMMER	7.25
35	B317683402	HAMMER PIN	1.25
36	B3177812AE	HAMMER SPRING	7.75
37	B317683801	HAMMER SPRING GUIDE	2.50
38	B317684002	HAMMER SPRING GUIDE SUPPORT, FRONT	2.50
39	B317684202	HAMMER SPRING GUIDE SUPPORT, REAR	2.50
40	B3176770AX	INERTIA PIECE	19.50
41	B317677101	INERTIA PIECE SPRING	1.25
42	B317677202	INERTIA PIECE SPRING ROD	2.50
43	B3177112AA	MAGAZINE FLOORPLATE, LONGTRAC	3.75
43	B3177111HA	MAGAZINE FLOORPLATE, SHORTTRAC	5.00
44	B3177082AE	MAGAZINE FLOORPLATE HINGE SPRING	1.25
44A	B3177081AA	MAGAZINE FLOORPLATE HINGE SUPPORT	2.50
44B	B3177092AJ	MAGAZINE FLOORPLATE HINGE SUPPORT PIVOT PIN	3.75
45	B3177044AA	MAGAZINE FLOORPLATE LATCH	2.50
46	B3177256AE	MAGAZINE FLOORPLATE LATCH SPRING	3.00
47	B3177047AJ	MAGAZINE FLOORPLATE PIVOT PIN	3.75
48	B3177275F4	MAGAZINE RETAINING SPRING	3.00
49	B317671001	MAGAZINE RETAINING SPRING PIN	2.50
50	U3177065F4	OPERATING HANDLE, BLUE, LH	24.00
50	B3177049FH	OPERATING HANDLE, BLUE, RH	17.00
50	U3177175FH	OPERATING HANDLE, NICKEL, LH	24.00
50	B3177084FH	OPERATING HANDLE, NICKEL, RH	20.00
50	B3177333AN	OPERATING HANDLE, STALKER, RH	21.75
51	B317623201	OPERATING HANDLE STOP	2.50
52	B317623601	OPERATING HANDLE STOP PIN	2.50
53	B317623801	OPERATING HANDLE STOP SPRING	1.25
55	*+ B3177301AV	RECEIVER, LONGTRAC, GR I, LH	600.00
55	*+ B3177058AT	RECEIVER, LONGTRAC, GR I, RH	393.75
53	*+ B3177949E5	RECEIVER, LONGTRAC, GR II, SATIN NICKEL, LH	450.00
53	*+ B3177913E5	RECEIVER, LONGTRAC, GR II, SATIN NICKEL, RH	450.00
53	*+ B3177394FE	RECEIVER, LONGTRAC, MONBU, RH	340.00
53	*+ B3177394AT	RECEIVER, LONGTRAC, STALKER, RH	330.00
55	*+ B3177300AV	RECEIVER, SHORTTRAC, GR I, LH	600.00
55	*+ B3177122AT	RECEIVER, SHORTTRAC, GR I, RH	393.75
55	*+ B3177947E5	RECEIVER, SHORTTRAC, GR II, SATIN NICKEL, LH	450.00

REF. NO.	PART NO.	DESCRIPTION	MSRP (US\$)
55	*+ B3177911E5	RECEIVER, SHORTTRAC, GR II, SATIN NICKEL, RH	\$450.00
55	*+ B3178102W7	RECEIVER, SHORTTRAC, MOINF, RH	340.00
55	*+ B3177393FE	RECEIVER, SHORTTRAC, MONBU, RH	340.00
55	*+ B3177393AT	RECEIVER, SHORTTRAC, STALKER, RH	330.00
NS	B3177395AJ	RECEIVER SPACER	7.25
56	B3177099AA	RECOIL PAD, 3/4"	13.25
56	B3177098AA	RECOIL PAD, 1/2"	13.25
57	BST77118AJ	RECOIL PAD SCREW	2.50
58	B3177087AA	RECOIL PAD SPACER, CLEAR	3.75
58	B3177191AA	RECOIL PAD SPACER, BLACK	4.25
59	B317600602	RECOIL SPRING	3.75
60	B3177037AP	RECOIL SPRING GUIDE, THREADED BARREL	9.75
60	B3177391AJ	RECOIL SPRING GUIDE, PRESS FIT	3.75
60A	B3177097AJ	RECOIL SPRING GUIDE RETAINING SCREW, PRESS FIT	1.25
60A	B3177392AJ	RECOIL SPRING GUIDE RETAINING SCREW, PRESS FIT	3.25
NS	B3177159E2	RECOIL SPRING GUIDE STOP PIN	1.25
61	* B3177071AK	SAFETY	2.50
62	B3177169FH	SAFETY PLUNGER	3.75
63	B3177170AE	SAFETY PLUNGER SPRING	1.25
64	B317687001	SAFETY SPRING RETAINER PIN	1.25
65	* B317681803	SEAR	6.00
66	B3177120AJ	SLIDE BAR, LONGTRAC	23.00
66	B3177000AJ	SLIDE BAR, SHORTTRAC	12.00
67	B3177124AX	SLIDE, LONGTRAC	23.00
67	B3177124MX	SLIDE, LONGTRAC ('09 - PRESENT)	23.00
67	B3177051AX	SLIDE, SHORTTRAC	23.00
67	B3177051MX	SLIDE, SHORTTRAC, ('09 - PRESENT)	25.00
69	BST1435001	STOCK BOLT	2.50
70	BST1435401	STOCK BOLT LOCK WASHER	1.25
71	B3177396AX	STOCK BOLT WASHER, COMPOSITE MODELS	2.75
71	BST1435801	STOCK BOLT WASHER, WOOD MODELS	2.50
67A	* B3177074EK	STOCK, GR I, SATIN	111.75
67A	* B3177920EH	STOCK, GR II W/ SKIP LINE, OIL	170.00
67A	* B3178071W8	STOCK, MOINF	120.00
67A	* B3177292EP	STOCK, MONBU	120.00
67A	* B3177291AE	STOCK, STALKER	90.00
68	B3177052AA	STOCK SPACER, 1 - 1	2.50
68	B3177054AA	STOCK SPACER, 1 - 2	2.50
68	B3177056AA	STOCK SPACER, 1 - 3	2.50
68	B3177053AA	STOCK SPACER, 2 - 1	2.50
68	B3177055AA	STOCK SPACER, 2 - 2	2.50
68	B3177057AA	STOCK SPACER, 2 - 3	2.50
72	BST77651AJ	TELESCOPE MOUNT FILLER SCREW, BLUE	1.25
72	BST77652A9	TELESCOPE MOUNT FILLER SCREW, NICKEL	1.25
NS	BST77653AJ	TELESCOPE MOUNT RECEIVER INSERT, BLUE	1.25
NS	BST77654A9	TELESCOPE MOUNT RECEIVER INSERT, NICKEL	1.25
72A	* B327906103	TIMING LATCH	4.00
72B	B317631612	TIMING LATCH PIN, RH	1.25
72B	B3177347AJ	TIMING LATCH PIN, LH	3.75
73	* B3177193FH	TRIGGER	16.50
74	B317681302	TRIGGER PIN / SEAR PIN	1.25

*Indicates part must be fitted by Browning Service Department or qualified gunsmith.
 ***Factory replacement only. Firearm must be returned.
 +Part may be purchased only by holders of a current, valid Federal Firearms License.
 NOTE: Unless otherwise indicated, part is interchangeable between gauges/calibers.



Autoloading Rifle
BAR ShortTrac® and BAR LongTrac®

BAR®

IMPORTANT: When ordering, list part number, part name, gun gauge/caliber and serial number. Please specify grade.
 Prices F.O.B. point of shipment — subject to change without notice. Prices effective January 1, 2013.

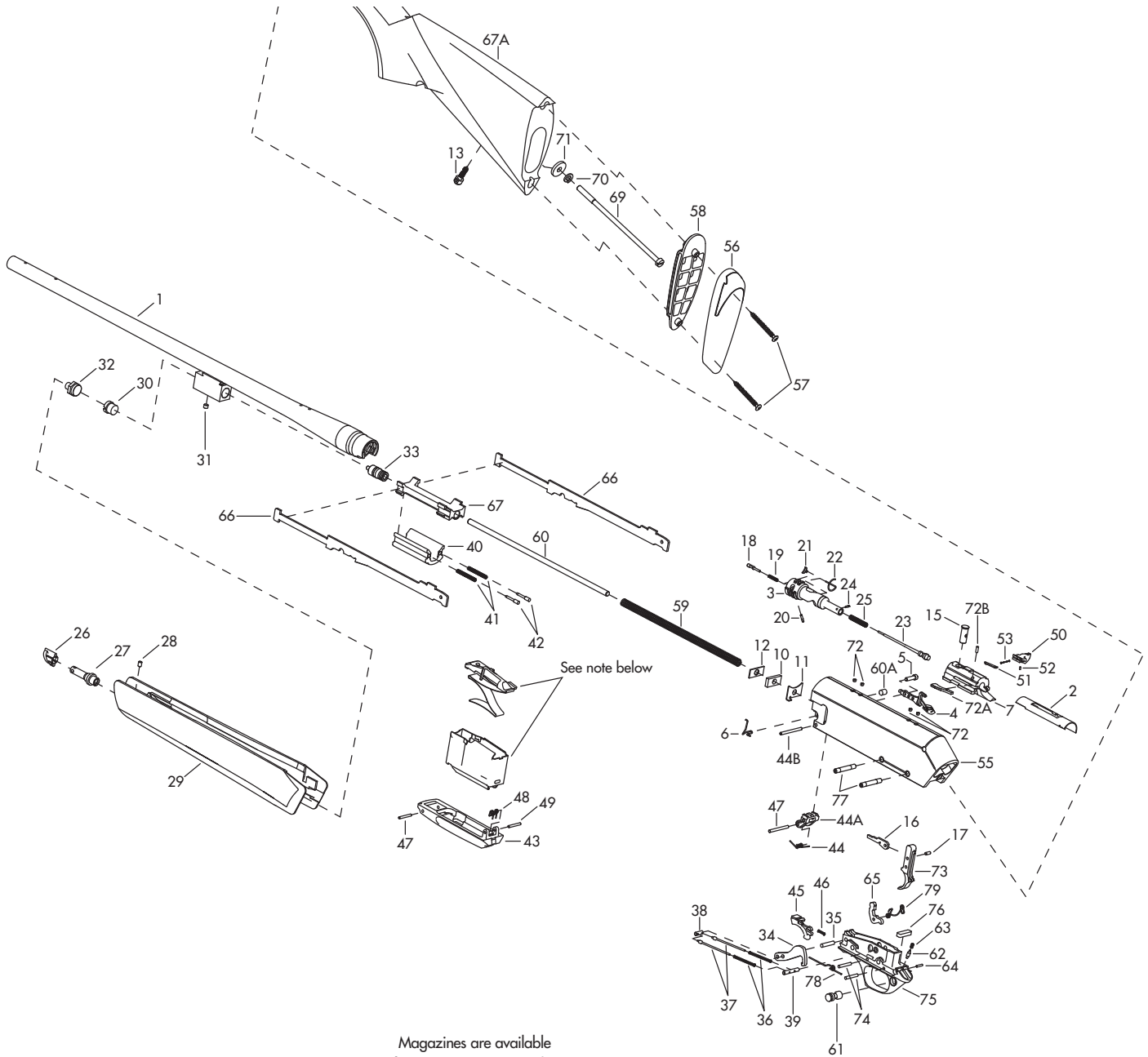
REF. NO.	PART NO.	DESCRIPTION	MSRP (US\$)
75	* B3177038AA	TRIGGER GUARD	\$13.25
76	B327915601	TRIGGER GUARD DAMPER (BUFFER)	1.25
77	B317687802	TRIGGER GUARD RETAINING PIN	2.50

REF. NO.	PART NO.	DESCRIPTION	MSRP (US\$)
78	B317688201	TRIGGER GUARD RETAINING PIN SPRING	\$1.25
79	B317682601	TRIGGER SEAR SPRING	2.50

*Indicates part must be fitted by Browning Service Department or qualified gunsmith.
 ***Factory replacement only. Firearm must be returned.
 +Part may be purchased only by holders of a current, valid Federal Firearms License.
 NOTE: Unless otherwise indicated, part is interchangeable between gauges/calibers.



NOTE: WHEN ORDERING PARTS USE THE PART NUMBER AND NOT THE SCHEMATIC REFERENCE NUMBER.



Magazines are available
from Browning Morgan by
calling 800-333-3288

Schematic is provided for parts identification only and should not be used as a guide to assemble guns.
CAUTION: Browning parts are not recommended for use in other guns though models may be similar.
Inadequately fitted parts may be dangerous.