



Over/Under Shotgun

725 CITORI

IMPORTANT: When ordering, list part number, part name, gun gauge/caliber and serial number. Please specify grade.
Prices F.O.B. point of shipment — subject to change without notice. Prices effective January 1, 2013.

REF. NO.	PART NO.	DESCRIPTION	MSRP (US\$)
1	B133800016	BLOCK	\$6.25
2	B1334274	BLOCK PIN	1.75
3	* B133800015	COCKING LEVER (ROUGH)	22.00
4	* B133800010	COCKING LEVER LIFTER (ROUGH)	4.75
4	* B133800057	COCKING LEVER LIFTER, GEN 2 (ROUGH)	4.75
5	B133800037	COCKING LEVER LIFTER BUSHING	4.00
6	B133800011	COCKING LEVER LIFTER PIN	2.00
6	B133800058	COCKING LEVER LIFTER PIN, GEN 2	2.00
7	B133800012	COCKING LEVER LIFTER SPRING	2.00
7	B133800059	COCKING LEVER LIFTER SPRING, GEN 2	2.00
8	B1336030	COCKING LEVER PIN	3.25
9	B1336032	COCKING LEVER PIN SET SCREW	1.75
10	B133800017	CONNECTOR	5.50
11	B1334074	CONNECTOR PIN	1.75
12	* B133800018	DISCONNECTOR	8.00
12	* B133800055	DISCONNECTOR, GEN 2	8.00
13	B133800019	DISCONNECTOR SPRING	2.00
13	B133800056	DISCONNECTOR SPRING, GEN 2	2.00
14	B133800043	EJECTOR HAMMER PIN	2.00
15	B1334130	EJECTOR HAMMER SPRING	2.75
16	B1334132	EJECTOR HAMMER SPRING PLUNGER	3.50
17	B1334134	EJECTOR HAMMER SPRING RECEIVER	7.25
18	B1334135	EJECTOR HAMMER SPRING RECEIVER SCREW	2.25
19	* B1334124	EJECTOR HAMMER, OVER	10.00
20	* B1334120	EJECTOR HAMMER, UNDER	10.00
21	B133800042	EJECTOR SEAR	16.00
22	B1334140	EJECTOR SEAR PIN	2.75
23	B1334138	EJECTOR SEAR SPRING	2.50
24	* B1334149	EJECTOR TRIP ROD, OVER	10.75
25	* B1334144	EJECTOR TRIP ROD, UNDER	11.50
26	* B1334082	EXTRACTOR	17.75
27	B1334110	EXTRACTOR EXTENSION SCREW	3.50
28	* B1334106	EXTRACTOR EXTENSION, OVER	16.00
29	* B1334102	EXTRACTOR EXTENSION, UNDER	16.00
30	B1334114	EXTRACTOR PIN	3.00
31	B1334168	FIRING PIN RETAINING PIN	2.25
32	B1334164	FIRING PIN SPRING, UNDER	2.50
33	B1334148	FIRING PIN, OVER	5.75
34	B1334157	FIRING PIN, UNDER	6.25
35	* B133800036	FOREARM BRACKET (ROUGH)	49.75
36	B1334417	FOREARM SCREW, FRONT	3.00
37	B1334419	FOREARM SCREW, MIDDLE	3.00
38	B133800040	FOREARM SCREW, REAR	2.00
39	B133800038	FOREARM SCREW, REAR NUT	2.00
40	* B133800006	FOREARM, FIELD/FEATHER	125.00
40	* B133800052	FOREARM, FIELD/FEATHER, GR III	200.00
40	* B133800053	FOREARM, FIELD/FEATHER, GR V	275.00
40	* B133800007	FOREARM, SPORTING	134.50
41	B1334267	HAMMER PIN	3.75
42	B133800022	HAMMER, OVER	15.25
43	B133800023	HAMMER, UNDER	15.25
44	B133800013	HINGE PIN	2.25
45	* B133800029	LOCKING BOLT	23.00

REF. NO.	PART NO.	DESCRIPTION	MSRP (US\$)
46	B133800024	MAINSRING	\$2.00
46	B133800054	MAINSRING, GEN 2	2.00
47	B1334297	MAINSRING GUIDE	5.00
48	B133800032	OT ADJUSTMENT PIN	2.50
49	B133800045	RECOIL PAD SCREW	2.00
50	B133800049	RECOIL PAD WASHER	2.00
51	BST81001AA	RECOIL PAD (INFLEX II)	25.00
NS	B1181109AA	RECOIL PAD, LOP SPACER 1/2"	5.00
NS	B1181097AA	RECOIL PAD, LOP SPACER 1/4"	5.00
52	* B133800001	RIB, FIELD, 26"	42.25
52	* B133800002	RIB, FIELD, 28"	42.25
52	* B133800003	RIB, SPORTING, 28"	42.25
52	* B133800004	RIB, SPORTING, 30"	42.25
52	* B133800005	RIB, SPORTING, 32"	42.25
53	B1334328	SEAR PIN	2.50
54	B133800033	SEAR SPRING	2.00
55	* B133800020	SEAR, OVER	9.50
56	* B133800021	SEAR, UNDER	9.50
57	B133800034	SELECTOR	2.00
58	B1334304	SELECTOR BALL	1.00
59	B1334306	SELECTOR BALL SPRING	1.00
60	B1334308	SELECTOR BLOCK	6.25
61	B1334313	SELECTOR PIN	2.50
62	B1334312	SELECTOR SPRING	11.50
63	B1334314	SELECTOR SPRING SCREW	2.75
64	B0008234	SIGHT, FRONT, FIELD (IVORY BEAD)	3.50
64	B1331007	SIGHT, FRONT, SPORTING (HiViz® Pro-Comp)	33.50
65	B0008234	SIGHT, MID-BEAD (IVORY)	3.50
66	B1334386	STOCK BOLT	5.00
67	B1334390	STOCK BOLT LOCK WASHER	1.50
68	B1334389	STOCK BOLT WASHER	2.25
69	* B133800008	STOCK, FIELD/FEATHER	350.00
69	* B133800050	STOCK, FIELD/FEATHER, GR III	425.00
69	* B133800051	STOCK, FIELD/FEATHER, GR V	500.00
69	* B133800009	STOCK, SPORTING	430.50
69	* B133800046	STOCK, SPORTING, ADJUSTABLE COMB	580.00
70	B133800039	TAKEDOWN LEVER BRACKET ASSEMBLY	26.25
71	B1334420	TAKEDOWN LEVER PIN	2.25
72	B133800041	TAKEDOWN LEVER SPRING	2.00
73	B1334314	TAKEDOWN LEVER SPRING SCREW	2.78
74	* B133800025	TOP LEVER	38.75
75	B133800026	TOP LEVER DOG	6.25
76	B1334472	TOP LEVER DOG SET SCREW	2.75
77	B1334460	TOP LEVER SPRING	3.00
78	B1334463	TOP LEVER SPRING RETAINER	8.50
79	B1334464	TOP LEVER SPRING RETAINER SCREW	3.00
80	B1334537	TRIGGER GUARD RETAINING PIN	3.00
81	* B133800030	TRIGGER GUARD, FIELD/FEATHER	26.00
81	* B133800031	TRIGGER GUARD, SPORTING	26.00
82	B1334328	TRIGGER PIN	2.50
83	* B1334492	TRIGGER PISTON	3.00
84	B1334494	TRIGGER PISTON PIN	1.25
85	B133800035	TRIGGER PISTON SPRING	2.00
86	B133800047	TRIGGER RETURN SPRING	4.00

*Indicates part must be fitted by Browning Service Department or qualified gunsmith.
 ***Factory replacement only. Firearm must be returned.
 +Part may be purchased only by holders of a current, valid Federal Firearms License.
 NOTE: Unless otherwise indicated, part is interchangeable between gauges/calibers.



IMPORTANT: When ordering, list part number, part name, gun gauge/caliber and serial number. Please specify grade.
Prices F.O.B. point of shipment — subject to change without notice. Prices effective January 1, 2013.

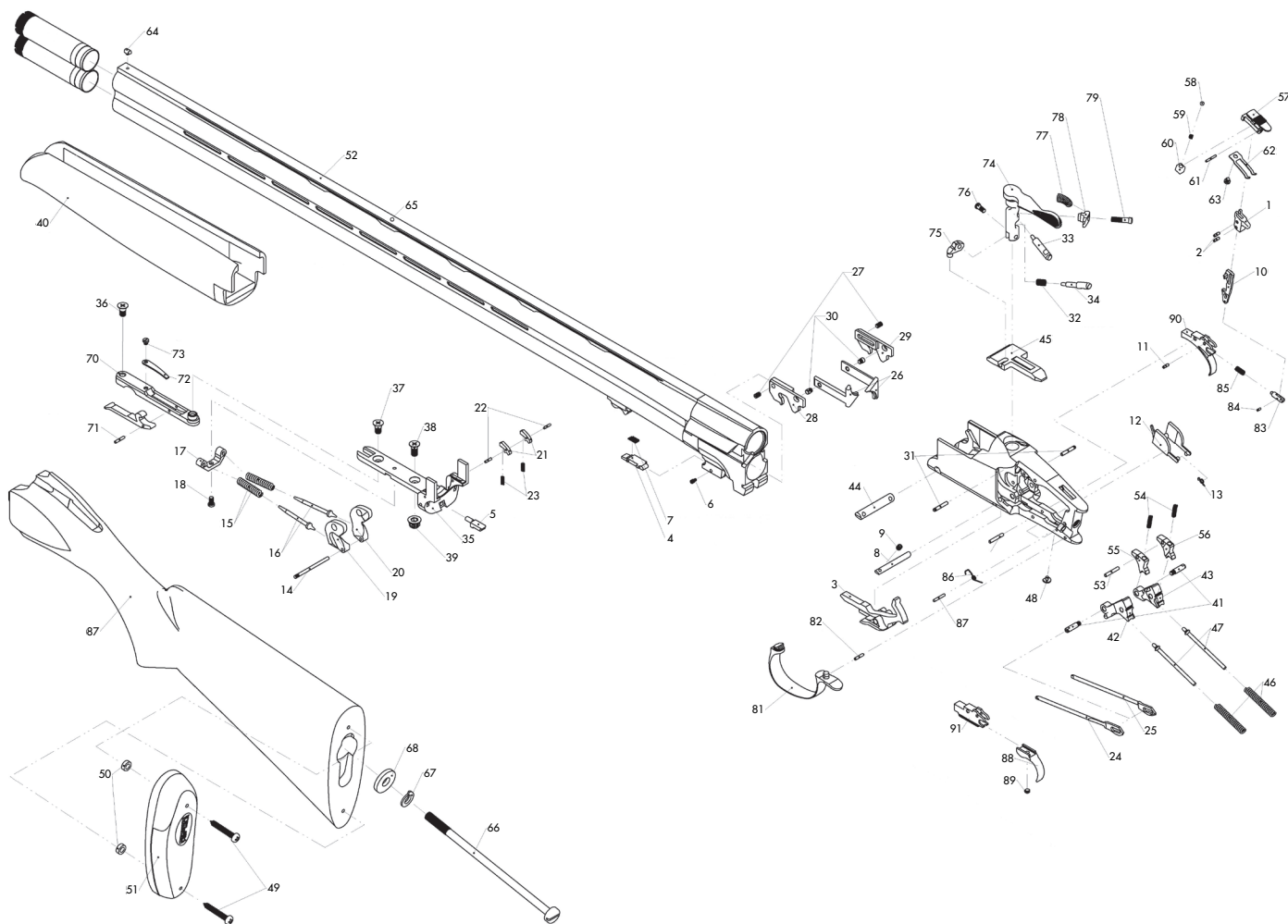
REF. NO.	PART NO.	DESCRIPTION	MSRP (US\$)
87	B133800048	TRIGGER RETURN SPRING, RETAINING PIN	\$3.00
88	B1337028	TRIGGER SHOE, NARROW SMOOTH	31.00
88	B1337026	TRIGGER SHOE, WIDE CHECKERED	31.00
88	B1337038	TRIGGER SHOE, WIDE SMOOTH (W/ RH CANT)	32.00

REF. NO.	PART NO.	DESCRIPTION	MSRP (US\$)
89	B1337025	TRIGGER STOP SCREW	\$1.25
90	* B133800027	TRIGGER, FIELD/HUNTER	24.75
91	* B133800028	TRIGGER, SPORTING (BASE ONLY)	22.25

*Indicates part must be fitted by Browning Service Department or qualified gunsmith.
 ***Factory replacement only. Firearm must be returned.
 +Part may be purchased only by holders of a current, valid Federal Firearms License.
 NOTE: Unless otherwise indicated, part is interchangeable between gauges/calibers.



NOTE: WHEN ORDERING PARTS USE THE PART NUMBER AND NOT THE SCHEMATIC REFERENCE NUMBER.



Schematic is provided for parts identification only and should not be used as a guide to assemble guns.
CAUTION: Browning parts are not recommended for use in other guns though models may be similar.
Inadequately fitted parts may be dangerous.